

The Arzel Advantage

Lifetime Parts Warranty: Arzel Zoning is the **ONLY** zoning manufacturer that backs its products with a lifetime warranty. That means no risk in purchasing and installing an Arzel Zoning system. In an industry where reputation is everything, you can rest easy knowing that they are covered by Arzel Zoning's lifetime guarantee.

100% Comfort Guarantee: If your customer is unsatisfied within one year with their Arzel Zoning system, Arzel will buy back the system at the original purchase price.


Easy Installation with Less Mess: Systems can be installed in one day with little or no inconvenience or mess.

Universal Compatibility: Arzel Zoning systems will work with any standard R-W-Y-G 24 volt system and is perfect for all retrofit applications. Don't have standard duct work-no problem! Arzel offers custom fit dampers to accommodate most duct work sizes and configurations. Technicians can offer zoning without the need to tear the house apart, saving time, money and aggravation.

Quiet, Air-Driven Operation: Arzel features motor less, pneumatic or air-driven dampers, which are not only quiet but reliable too.



Installation Flexibility: Arzel Zoning panels can handle up to 35 dampers each. You can add additional zones using the Arzel Slave Board. Tubing can be run up to 200 feet from the panel.


Arzel Quality: Arzel's air-driven zoning systems achieve maximum efficiency through the use of a medical grade pump. Arzel dampers are among the few in the industry that offers a gasket around the perimeter of the blade which ensures a nearly airtight seal.



- Compatible on single stage, dual fuel, heat pump, or high velocity equipment
- Compatible with any standard 24 vac thermostat
- Additional zones may be added
- 2 or 3 zones
- Used for single stage equipment ONLY




MPS SERIES CONTROL PANELS

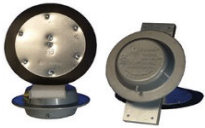
Model Number	Description	Zones	Barcode
PAN00202	PAN-00202 CONTROL PANEL 202MPS	2-zone panel	
PAN00203	PAN-00203 CONTROL PANEL 203MPS	3-zone panel	



- Residential & light commercial four zones or less
- Single or multi-stage equipment - Variable speed Furnace, Air conditioner, Heat pump, Dual fuel
- Independent blower & compressor staging
- LCD display
- Replaceable fuse protection
- Easy to use lever style terminals
- Manual pump switch opens all dampers for testing

HEAT PUMPRO CONTROL PANELS

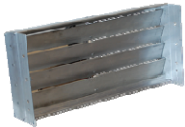
Model Number	Description	Zones	Barcode
PANHPP02	PAN-HPP02 HTG.PUMPRO 2-ZONE	2-zone panel	
PANHPP03	PAN-HPP03 HTG.PUMPRO 3-ZONE	3-zone panel	
PANHPP04	PAN-HPP04 HTG.PUMPRO 4-ZONE	4-zone panel	



- Available in over 70 sizes so it is easy to find the size and shape that best fits any application

EZYSLIDE ROUND DAMPERS

Model Number	Description	Size	Barcode
STKER0006	ROUND DAMPER	6"	
STKER0007	ROUND DAMPER	7"	
STKER0008	ROUND DAMPER	8"	



- The Regi® damper is the answer when there is no access to the duct
- It is installed in boot directly beneath the floor register

REGIDAMPER

Model Number	Description	Size	Barcode
REG212	REGISTER DAMPER	2" X 12"	

OVAL STACK DAMPER

Model Number	Description	Size	Barcode
STKOER0006	OVAL STACK DAMPER	6"	



- The EzyFit® damper has a compact folded design which allows you to slip the damper through the register and once installed magnets set it firmly in place
- Plenum rated tubing is then run through the duct work and attached to the damper

EZYFIT RETROFIT

Model Number	Description	Size	Barcode
STKEZFT6	EZY-FIT RETROFIT	6"	



- The Inserta® damper features a spring loaded belly band that holds it firmly in any type of round duct
- This makes it a good fit for applications in which the main trunk is accessible but the take-off runs are not.

INSERTA DAMPER

Model Number	Description	Size	Barcode
INSRT6	67033*1	6"	



- Dampers have the mounting plate & actuator mounted on either the side or bottom of the damper
- If mounting plate & actuator is on the longer dimension the damper is referred to as a bottom-mount damper
- If mounting plate & actuator is on the shorter dimension the damper is referred to as a side-mount damper

EZYSLIDE RECTANGULAR DAMPERS

Model Number	Description	Size	Barcode
STKSBE810	Rectangular BOTTOM Mount	8" X 10"	
STKSBE812	Rectangular BOTTOM Mount	8" X 12"	
STKSBE814	Rectangular BOTTOM Mount	8" X 14"	
STKSBE816	Rectangular BOTTOM Mount	8" X 16"	
STKSBE818	Rectangular BOTTOM Mount	8" X 18"	
STKSBE820	Rectangular BOTTOM Mount	8" X 20"	
STKSBE822	Rectangular BOTTOM Mount	8" X 22"	
STKSBE824	Rectangular BOTTOM Mount	8" X 24"	
STKSSE88	Rectangular SIDE Mount	8" X 8"	
STKSSE810	Rectangular SIDE Mount	8" X 10"	
STKSSE812	Rectangular SIDE Mount	8" X 12"	
STKSSE814	Rectangular SIDE Mount	8" X 14"	
STKSSE816	Rectangular SIDE Mount	8" X 16"	
STKSSE818	Rectangular SIDE Mount	8" X 18"	
STKSSE820	Rectangular SIDE Mount	8" X 20"	



• The ModuPass® system works with variable speed motors and constantly monitors the static pressure in the trunk and adjusts to allow the prescribed amount of bypass air

MOD BYPASS KIT

Model Number	Description	Size	Barcode
MODBYP08	MOD BYPASS KIT	8"	
MODBYP10	MOD BYPASS KIT	10"	
MODBYP12	MOD BYPASS KIT	12"	



• Recommended only for single stage applications where zones are nearly equal in size
 • The barometric bypass damper is an economical solution for non-variable speed blowers to overcome objectionable air noise.

BAROMETRIC ROUND

Model Number	Description	Size	Barcode
SPDR0008	BAROMETRIC ROUND	8"	
SPDR0010	BAROMETRIC ROUND	10"	



The Arzel Tool Kit Includes:

• Duct Finder • EZY HUB • Airflow Indicator • Stapler • 2 Boxes of Staples • 200 Tees & Screws
 25: Elbows • Couplings • Plugs

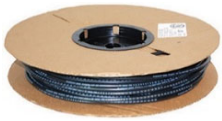
TOOLS

Model Number	Description	Barcode
TOOLKIT	TOOL-KIT	
TOOLSTAPLES	TOOL-STPLS STAPLES	







BLACK FITTINGS

Model Number	Description	Quantity	Barcode
FITC025	Black Coupling 4mm Barb	25	
FITTE025	Black Elbow 4mm Barb	25	
FITTP025	Black Plug 4mm Barb	25	
FITTT025	Black Tee 4mm Barb	25	



TUBING

Model Number	Description	Length	Barcode
PVCBLUE	PVC-BLACK TUBING W/BLUE STRIPE	200 Feet	
PVCORANGE	PVC-BLACK TUBING W/ORANGE STRIPE	200 Feet	
PVCRED	PVC-BLACK TUBING W/RED STRIPE	200 Feet	
PVCWHITE	PVC-BLACK TUBING W/WHITE STRIPE	200 Feet	
PLEMBLUE	PLEN-BLUE PLENUM TUBING BLUE	250 Feet	