



PHANTOM[®] COMBI

**NEW High Efficiency Gas-Fired Stainless Steel,
Condensing Combi Boiler**



- 95% AFUE with 10:1 turndown
- Reliable, proven stainless steel heat exchanger technology
- Flat plate heat exchanger provides superb domestic hot water performance
- Factory prest Honeywell control system for out-of-the-box performance
- Touch screen diagnostic display with plain-language guidance
- 5-year parts warranty included
- Field convertible to LP gas with optional kit
- Universal boiler vent connection for polypropylene, CPVC/PVC & stainless steel
- Outdoor reset and sensor

MODEL NUMBER	Heating Input (MBH) Min-Max	AFUE %	DHW Input (MBH) Min-Max	Max Draw GPM		Approx. Shipping Weight (lbs)	BAR CODE
				70°F Rise	77°F Rise		
PHNTM135CB	12-120	95.0	12-135	3.3	3.0	152	
PHNTM150CB	15-150	95.0	15-150	3.9	3.7	169	
PHNTM180CB ⁵	18-180	95.0	18-180	4.5	4.1	169	

OPTIONAL EQUIPMENT

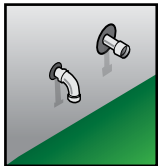
PART #	DESCRIPTION	BAR CODE
107874-01	LP Conversion Kit PHNTM135CB-150CB	
107875-01	LP Conversion Kit PHNTM180CB	
430150	EZ Loop Low Loss Header (PHNTM135CB-150CB-180CB)	
109238-01	Combi Base Pedestal PHNTM135CB	
109239-01	Combi Base Pedestal PHNTM150CB-180CB	
107039-02	CPVC/PVC 3" Vent Kit	

PHANTOM COMBI

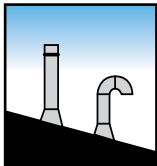
TECHNICAL SPECIFICATIONS

Typical Venting Configurations (Horizontal and Vertical) up to 135 sq. ft.

Illustrations are for representation only. For complete venting information, please see installation manual.



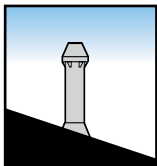
Horizontal 2-pipe



Vertical 2-pipe



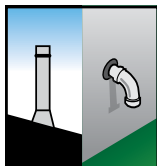
Horizontal 2-pipe low profile



Vertical 2-pipe concentric

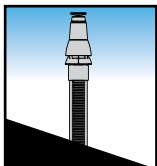


Horizontal 2-pipe concentric

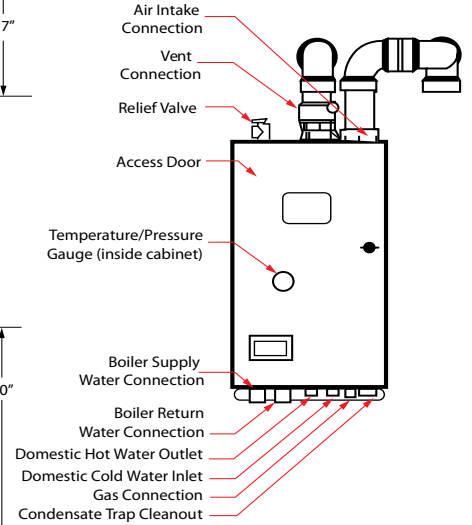
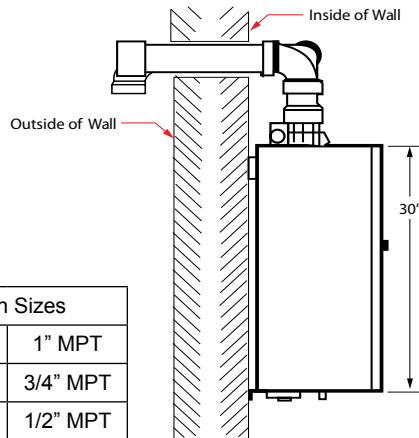
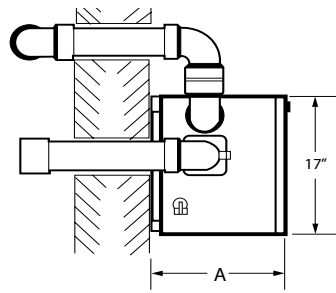


Hybrid

Vertical exhaust/ sealed B-vent for combustion air.



PLUS polypropylene & stainless steel chimney chase options



Connection Sizes	
Supply/Return	1" MPT
DHW	3/4" MPT
Gas	1/2" MPT
Vent	3"

Model(s)	"A" DIMENSION
PHNTM135CB	15"
PHNTM150CB & 180CB	19"

Space Heating Ratings					Domestic Hot Water (DHW) Ratings ¹			Approx. Shipping Weight (lbs)
Model Number	Input (MBH) Min-Max	Heating Capacity, MBH	Net AHRI Water, MBH ²	AFUE, %	Input (MBH) Min-Max	Max Draw GPM ^{3,4}		
						70°F Rise	77°F Rise	
PHNTM135CB	12-120	112	97	95.0	12-135	3.3	3.0	152
PHNTM150CB	15-150	142	123	95.0	15-150	3.9	3.7	169
PHNTM180CB	18-180	169	147	95.0	18-180	4.5	4.1	169

Notes:

- DHW ratings are not AHRI certified.
- The Net AHRI Water Ratings shown are based on a piping and pickup allowance of 1.15. The manufacturer should be consulted before selecting a boiler for installations having unusual piping and pickup requirements, such as intermittent system operation, extensive piping systems, etc.
- Maximum draw rates shown are at sea level and minimum vent length. Under other conditions draw rates will be reduced proportionally to the reduction in input. See manual for input derate information.
- Minimum flow rate of 0.56GPM required through the boiler to initiate a call for DHW. A higher flow rate may be required through the fixture due to mixing at the tempering valve and fixture itself.

STANDARD EQUIPMENT

- Stainless steel heat exchanger
- Pre-installed circulator and DHW 3-way valve
- SOLA Control System
 - LCD touch screen display
 - Self-guided control menus
 - Built-in self-diagnostics
 - Additional circulator output
 - Outdoor reset including outside sensor
 - DHW priority
 - Warm weather shutdown
- UL 353 Listed boiler flow switch
- Supply and return water sensors with integral high limit function
- Universal exhaust vent connection (CPVC/PVC, PP, SS)
- Pre-installed hanging bracket and wall mount kit
- Field adjustable for high altitude with minimal derate (135CB, 150CB)
- Installed domestic hot water flow switch and temperature sensor.

